

**Apt** Interiors

At Apt, interior design is simply an extension of our architectural work; we approach it with the same rigorous thought process, attention-to-detail and enthusiasm. This allows us to bring our buildings to life through intelligent combinations of texture, colour, pattern and light.

We don't have a house style, rather seeking to craft tailored and unexpected solutions to each and every brief. We design beautiful pieces of fitted joinery, custom furniture and bespoke ironmongery, working closely with some of the world's finest craftspeople to create exceptional and inspiring spaces.

Every element tells a story, ensuring that our interiors feel dynamic, personal, and effortlessly stylish – all while working in perfect harmony with the base build.

What could be more Apt.

## Living

We have created bespoke and beautiful interiors for a wide range of 'living' projects – from high-end residential developments and one-off homes, to student residences and affordable housing. Our solutions seamlessly blend elegant minimalism and neutral palettes with rich textural accents, custom furniture and statement art. The results are dynamic yet harmonious interiors, tailored to the residents' individual lifestyle and taste.



1

6



2

- 1. Chapter House | Living
- 2. Chapter House | Master Suite

7





1



2

1. Holmewood | Retractable Pool
2. Chapter House | Gym

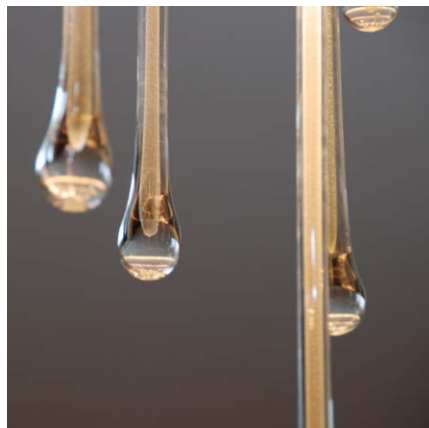




1



2



3

1. 3 Merchant Square | Lobby
2. Chapter House | Lobby Detail
3. 3 Merchant Square | Murano Glass Chandelier
4. Chapter House | Lobby



4





1



2



3



4





1

1. Private Members Club | Reception





1



2

- 1. Park House | Residential Lobby
- 2. 3 Merchant Square | Penthouse Living





1



2

1. Chapter House | Living
2. Chapter House | Skylight Detail





1



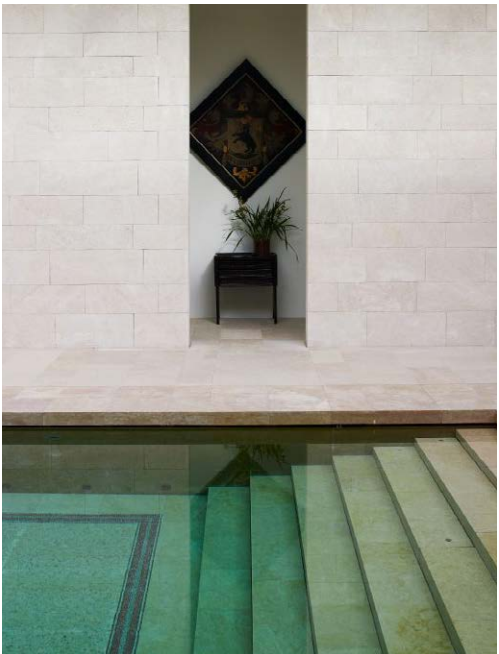
3



2



4



5

- 1. Chapter House | Bathroom
- 2. Chapter House | Gym
- 3. St John's Wood | Residential Pool
- 4. Sloane Building | Bathroom
- 5. Holmewood | Retractable Pool Detail





1

1. Private Members Club | Club Room  
2. Chapter House | Reception

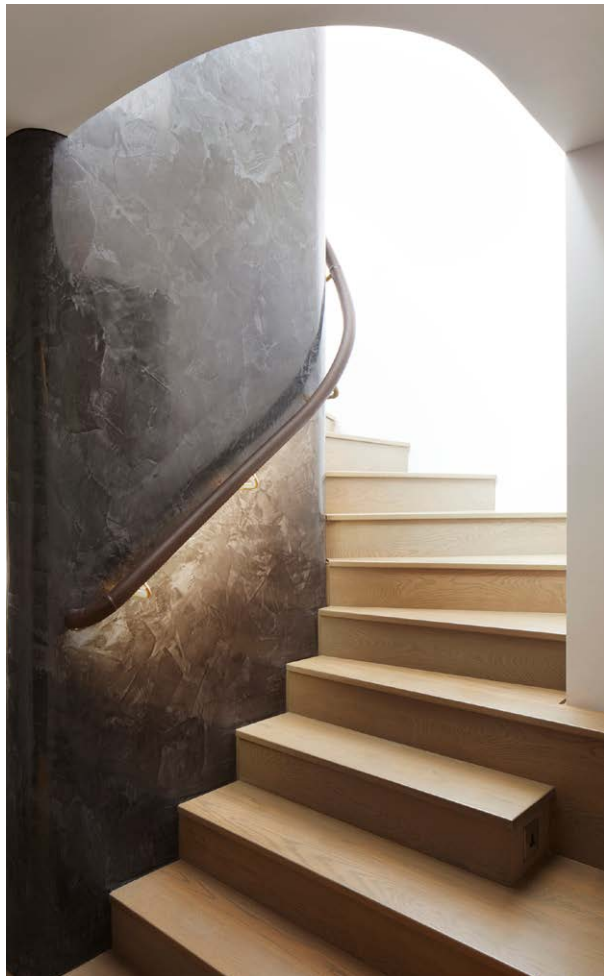


2





1



2

1. The Sloane Building | Stair Detail
2. Chapter House | Penthouse Stair
3. St John's Wood | Kitchen
4. 3 Merchant Square | Living

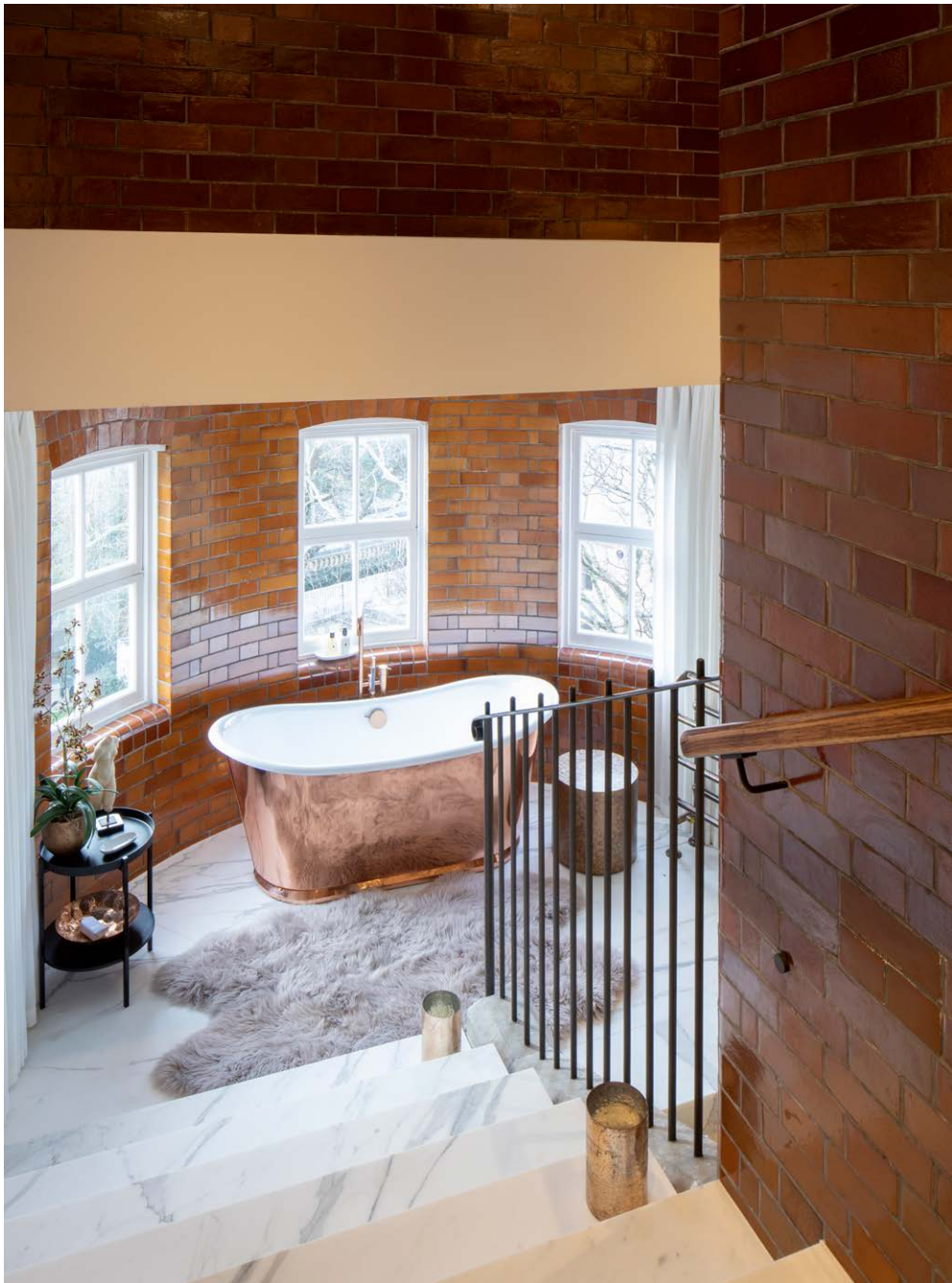


3



4





1



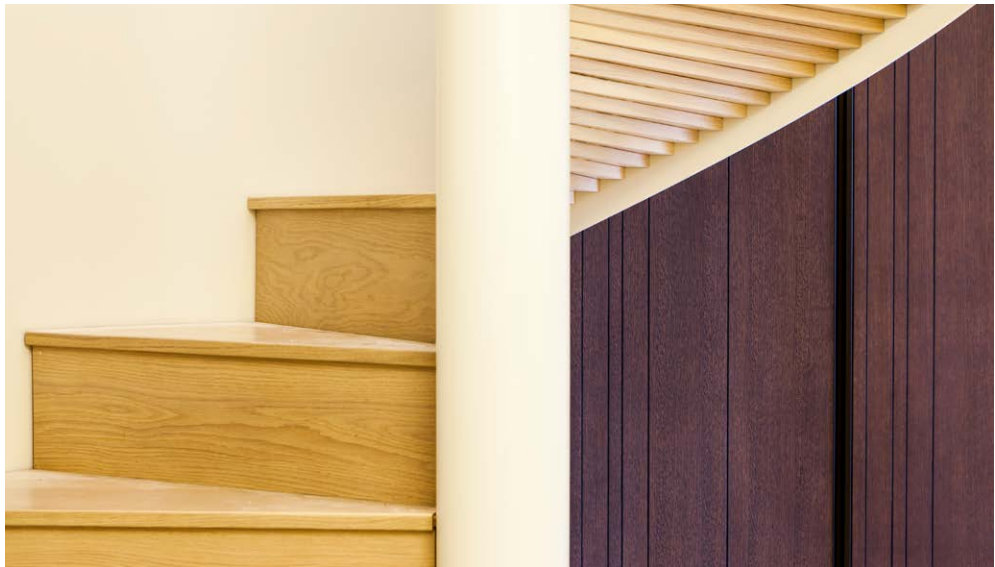
2



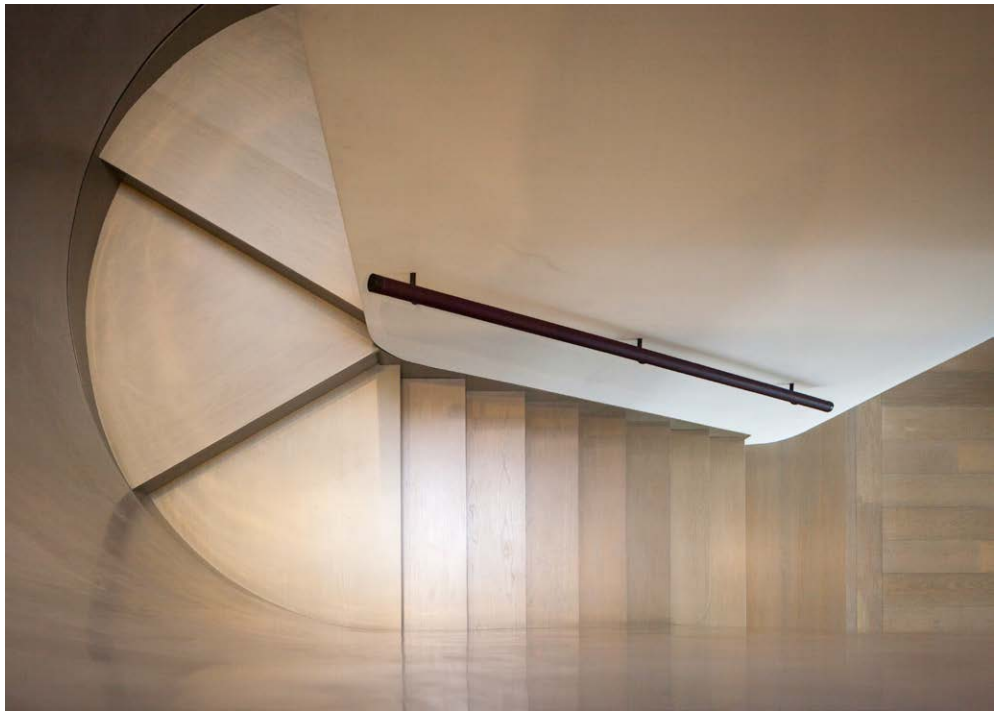
3

1. The Sloane Building | Master Bathroom
2. The Sloane Building | Master Bedroom
3. 3 Merchant Square | Dressing





1



2



3



4

1. 3 Merchant Square | Stair Detail
2. 3 Merchant Square | Penthouse Stair
3. Chapter House | Fixtures and Furnishing
4. Chapter House | Bedroom

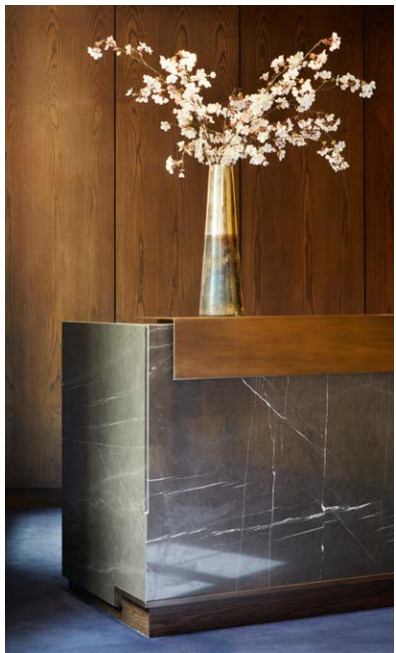




1



2



1. The Sloane Building | Penthouse Living
2. Chapter House | Bespoke Joinery and Reception Desk
3. Chapter House | Kitchen



3





1

1. The Sloane Building | Feature Stair
2. Old Church Street | Off-site Living Module
3. Park House | Living



2



3





1

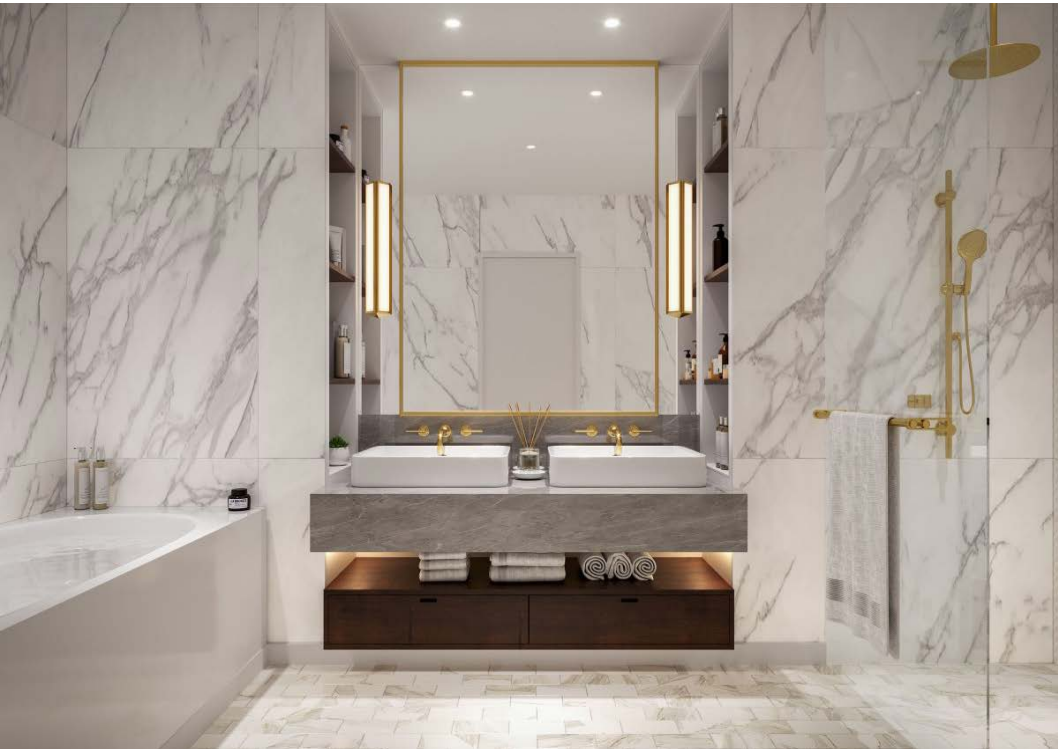


2

1. The Sloane Building | Stair
2. Chapter House | Living
3. St John's Wood | Bedroom
4. St John's Wood | Bathroom



3



4





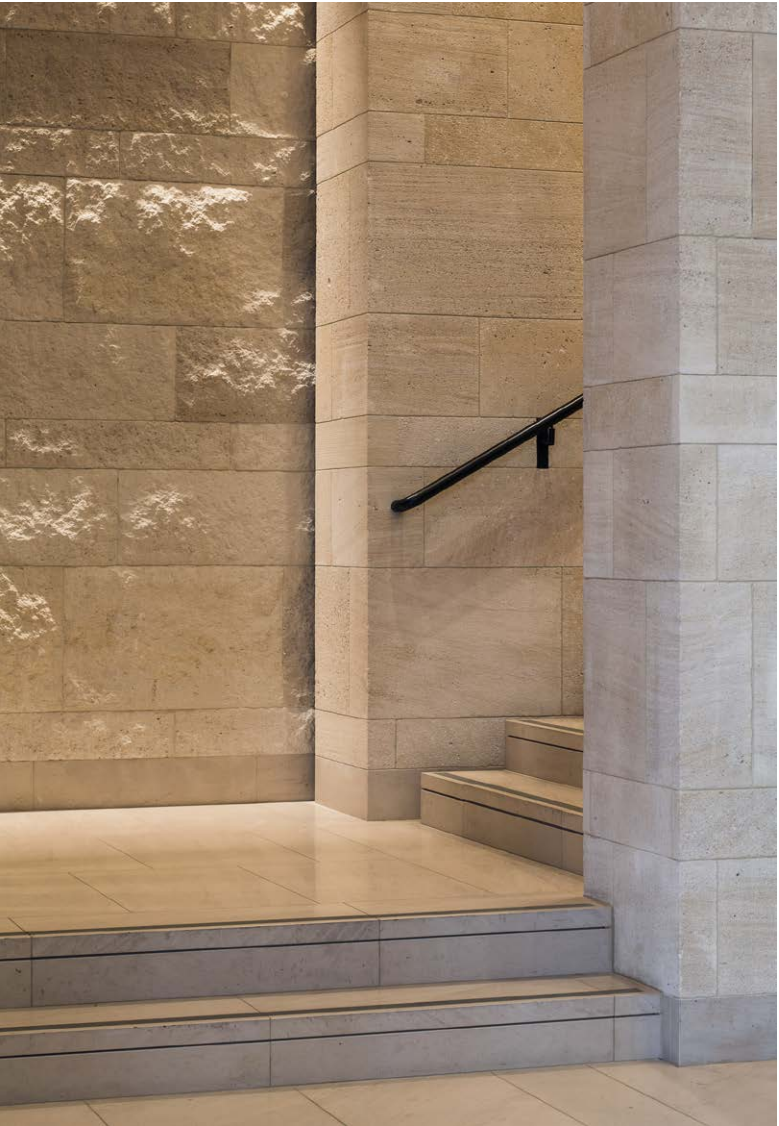
1



2



1. Chapter House | Window Detail
2. 3 Merchant Square | Penthouse Master Suites
3. 3 Merchant Square | Main Entrance
4. Chapter House | Shower Room Detail



3

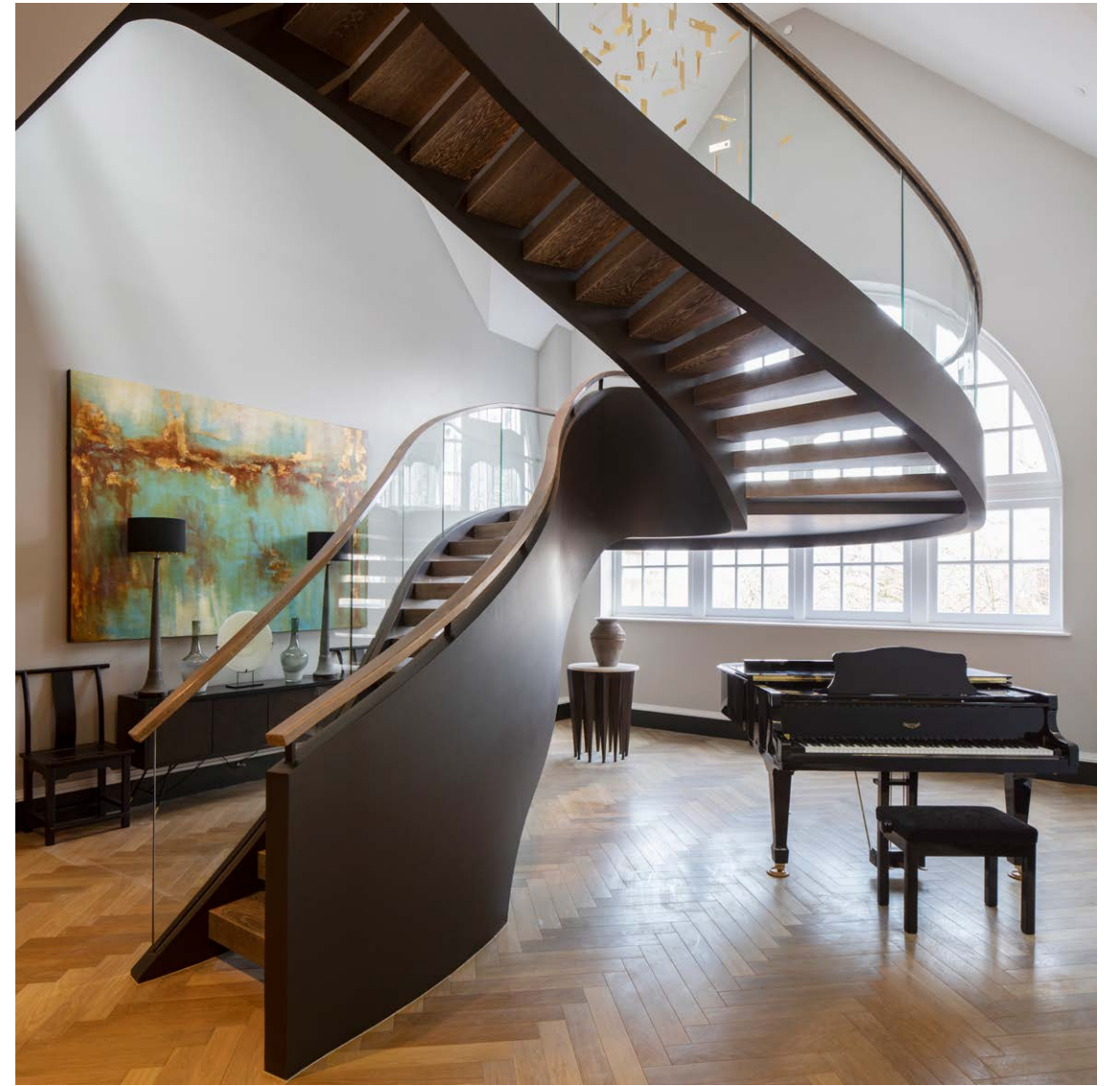


4





1



3



2

1. The Sloane Building | Kitchen
2. 3 Merchant Square | Living
3. The Sloane Building | Feature Stair





1



2



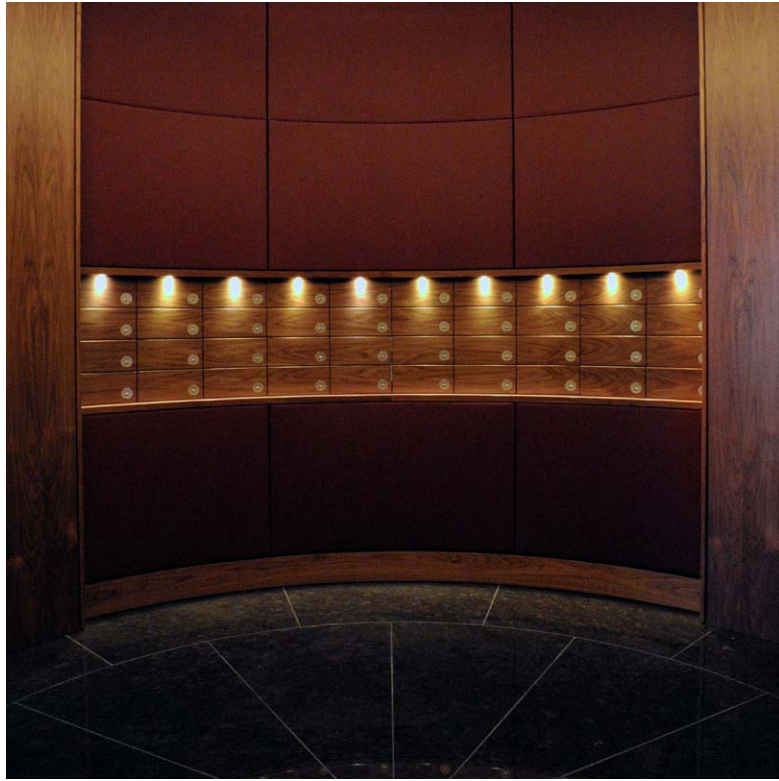
3



4

- 1. Holmewood | Living
- 2. 3 Merchant Square | Penthouse Lobby
- 3. Old Church Street | Joinery Detail
- 4. Old Church Street | Living





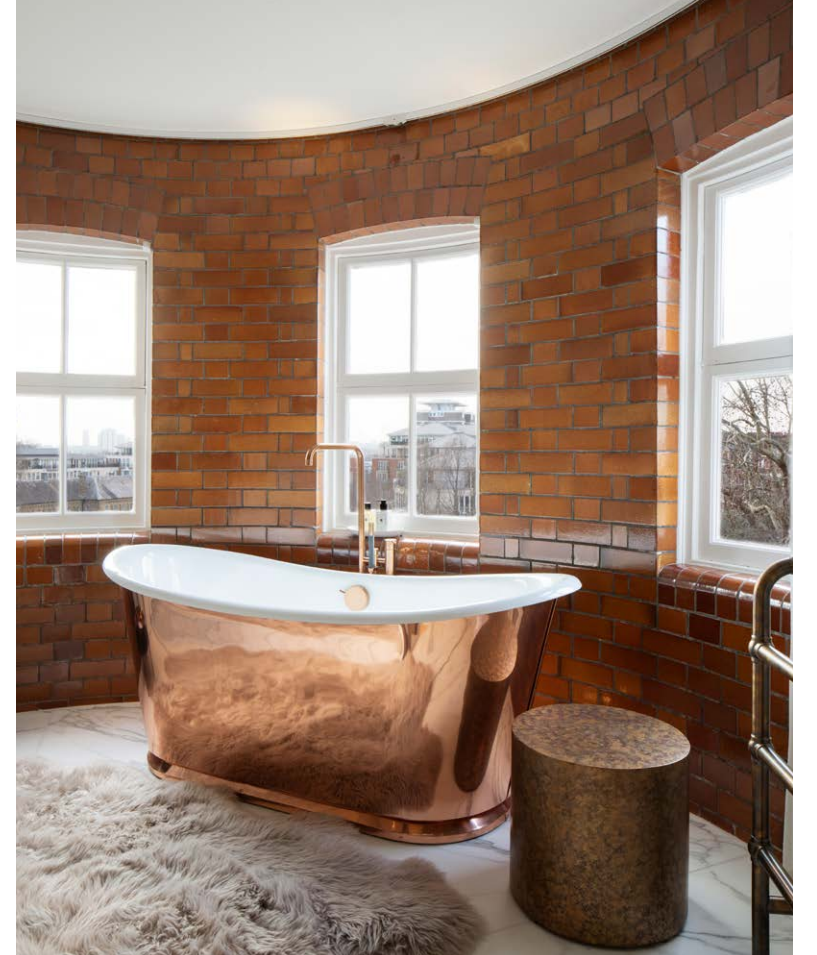
1



2



3



4

1. Park House | Bespoke Post Boxes
2. Park House | On-floor Circulation
3. 3 Merchant Square | Snug
4. The Sloane Building | Bathroom





1



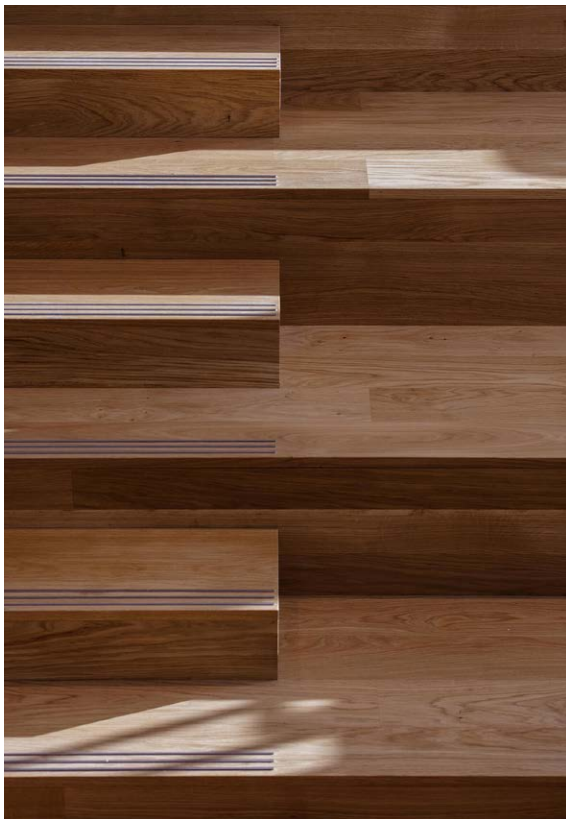
2



3

- 1. Private Members Club | Main Lounge
- 2. Waterman House | Bedroom
- 3. Park House | Residential Lobby





1



2



3



4

1. Urbanest City | Stair Detail
2. Parkside Infinity | Lounge Detail
3. Chapter House | Kitchen
4. Chapter House | Penthouse Kitchen





1



2

1. Parkside Infinity | Student Breakout Space
2. Private Members Club | Garden Room





1



2



3



4

1. Parkside Infinity | Student Sky Lounge
2. Medius House | Escape Stair
3. Urbanest City | Student Common Area
4. Parkside Infinity | Student Study Area

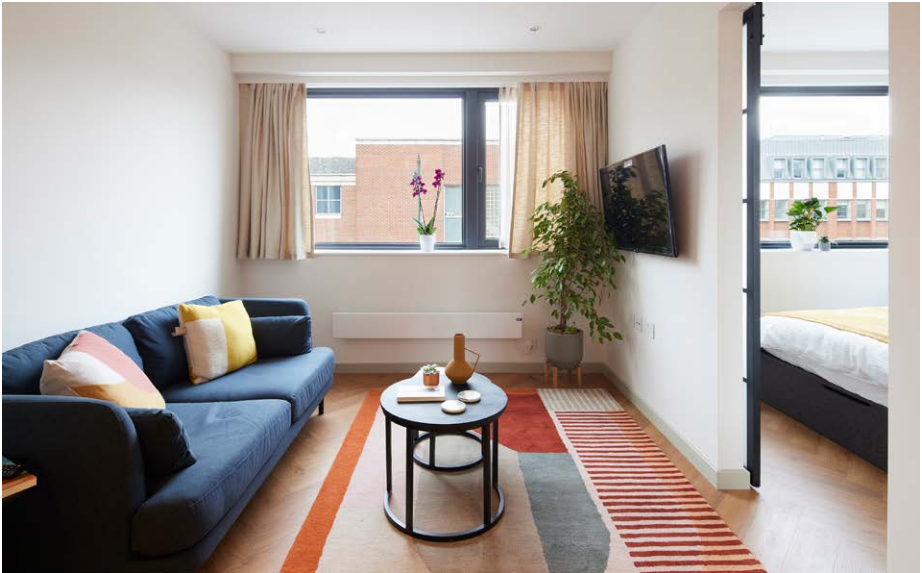




1



2



3

- 1. Parkside Infinity | Student Common Area
- 2. Urbanest City | Student Room
- 3. Integra House | Living





1



3



2



4

1. Urbanest City | Roof Breakout Space
2. Trafalgar Way | Reception
3. Integra House | Kitchen
4. Urbanest City | Student Room





1

1. Aston Grange | Co-living Lounge  
2. Parkside Infinity | Reception



2





1



4



2



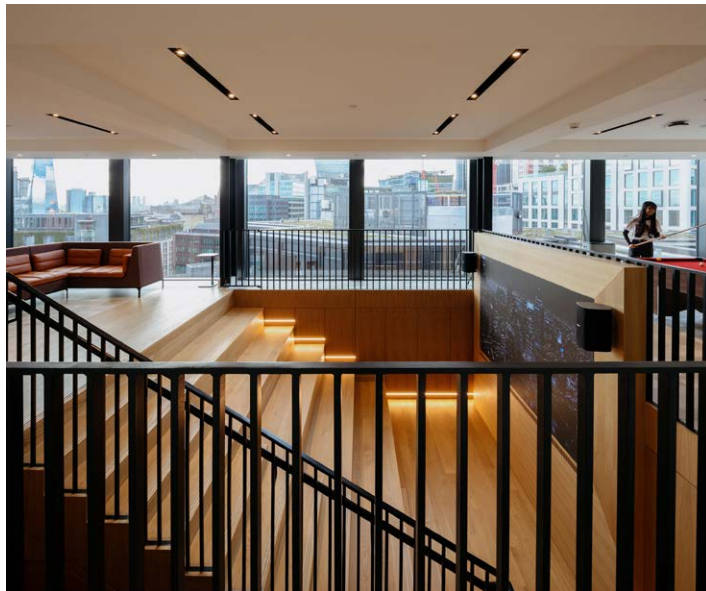
3



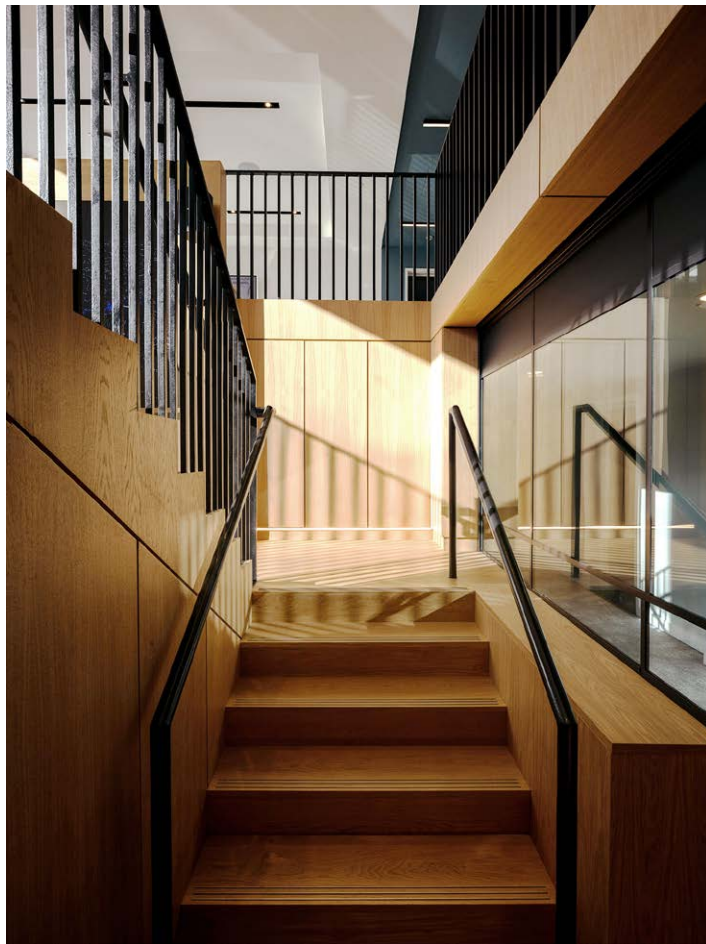
5

1. Urbanest City | Kitchen
2. Chapter House | Bathroom
3. Integra House | Bathroom
4. Parkside Infinity | Studio
5. Trafalgar Way | Games Room





1



2

1. Urbanest City | Student Media Room
2. Urbanest City | Stair Detail
3. Trafalgar Way | Student Lounge
4. Parkside Infinity | Student Study Room



3



4



## Workplace

Our experience in the workplace sector spans from serviced office shells (Cat A) to fully-conceived and furnished working environments (Cat B). From striking boardrooms to enriching breakout areas, our interiors balance functionality and creative expression to promote collaboration and wellbeing within the evolving world of workplace culture.





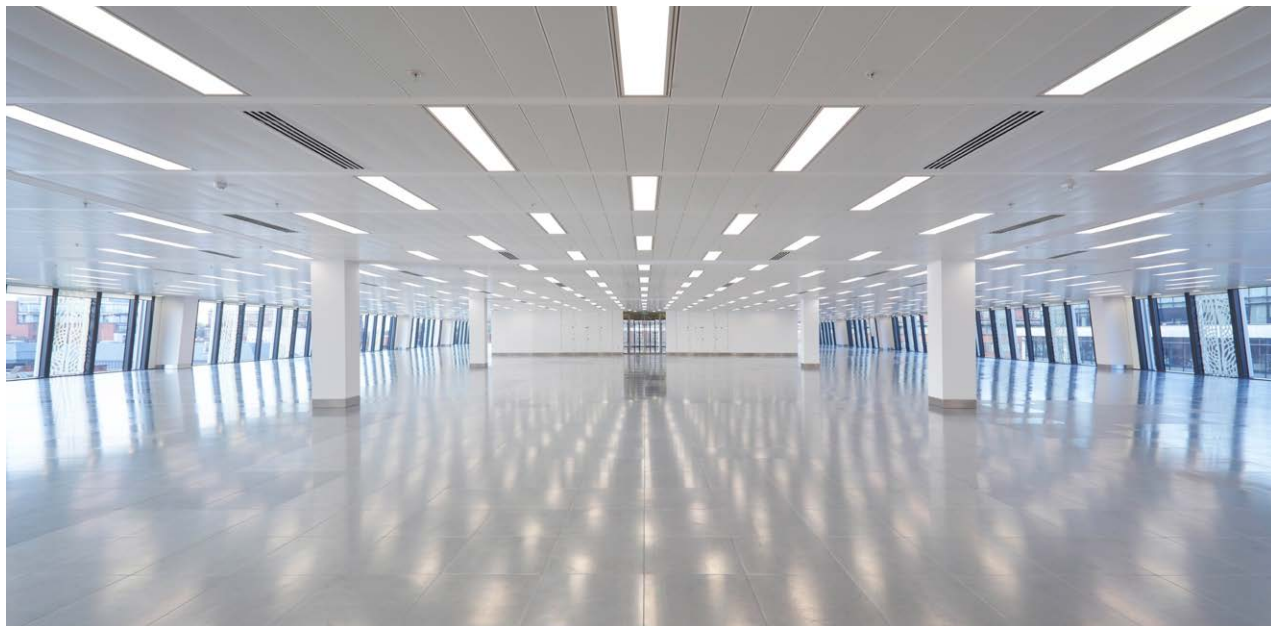
1

1. Longwater | Cat A Floorspace





2



1

- 1. Park House | Cat A Floorspace
- 2. Park House | Office Entrance Lobby





1



3



2



4

1. The Earnshaw | Escape Stair
2. The Earnshaw | Breakout Space and Terrace
3. Apt Studio | Breakout Alcove
4. The Earnshaw | Stair Detail





1



2

1. The Earnshaw | Cat A Floorspace
2. The Earnshaw | Cat B Fitout





1



2



- 1. Urbanest City | Entrance Lobby
- 2. Apt Studio | Details
- 3. 1 Merchant Square | Parking Entrance



3





1



2



3

1. Apt Studio | Stair
2. Urbanest City | Lobby Details
3. Longwater | Bespoke Wayfinding





1



2

1. Park House | Top Floor Office Space
2. Park House | Office Reception





1



3



2



4

1. Apt | Studio
2. Longwater | Cat A Floorspace
3. Euston House | Flexible Workspace
4. The Earnshaw | Lounge Area





1



2



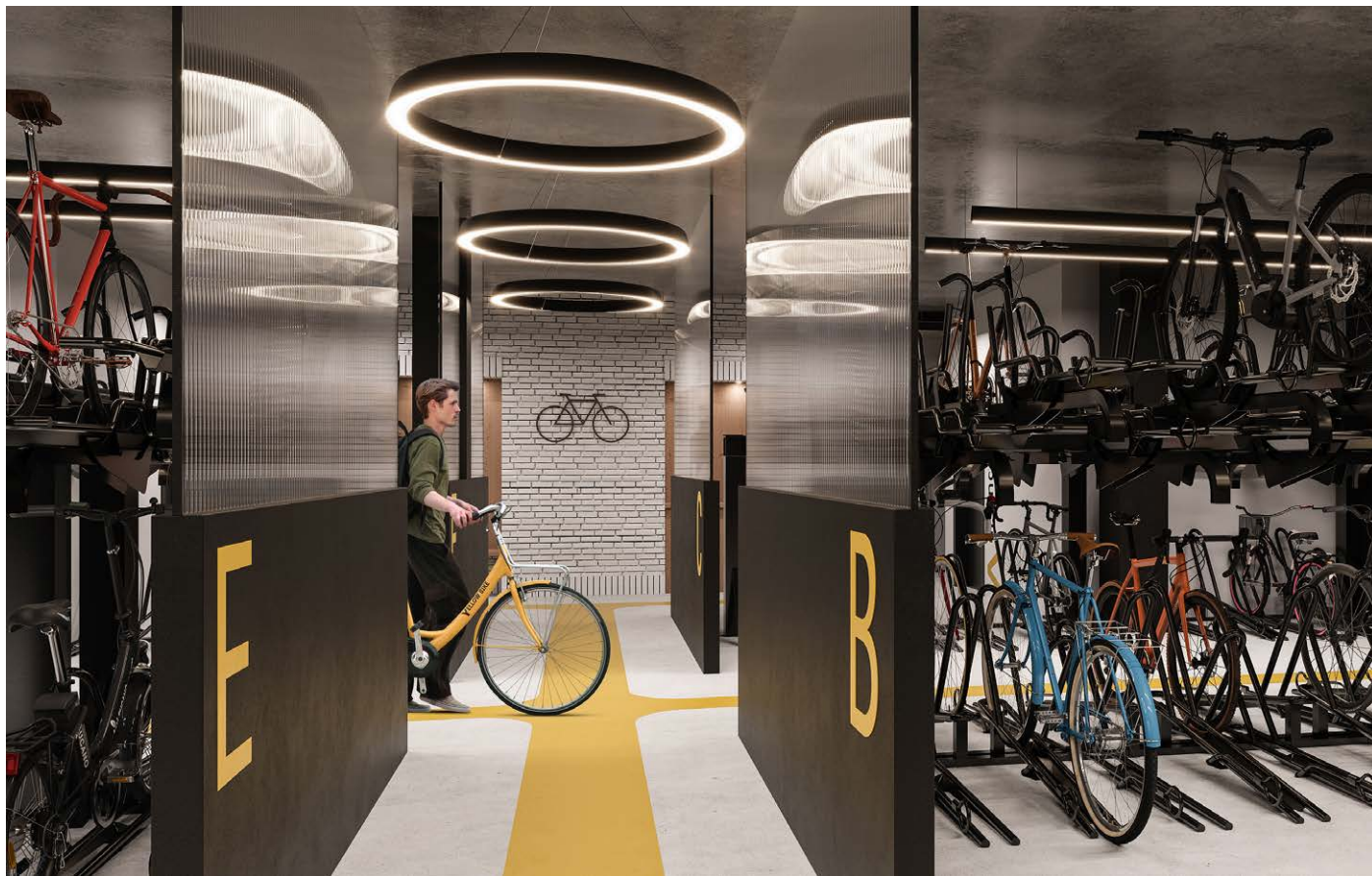
3

1-3. Park House | On-floor Bathrooms





1



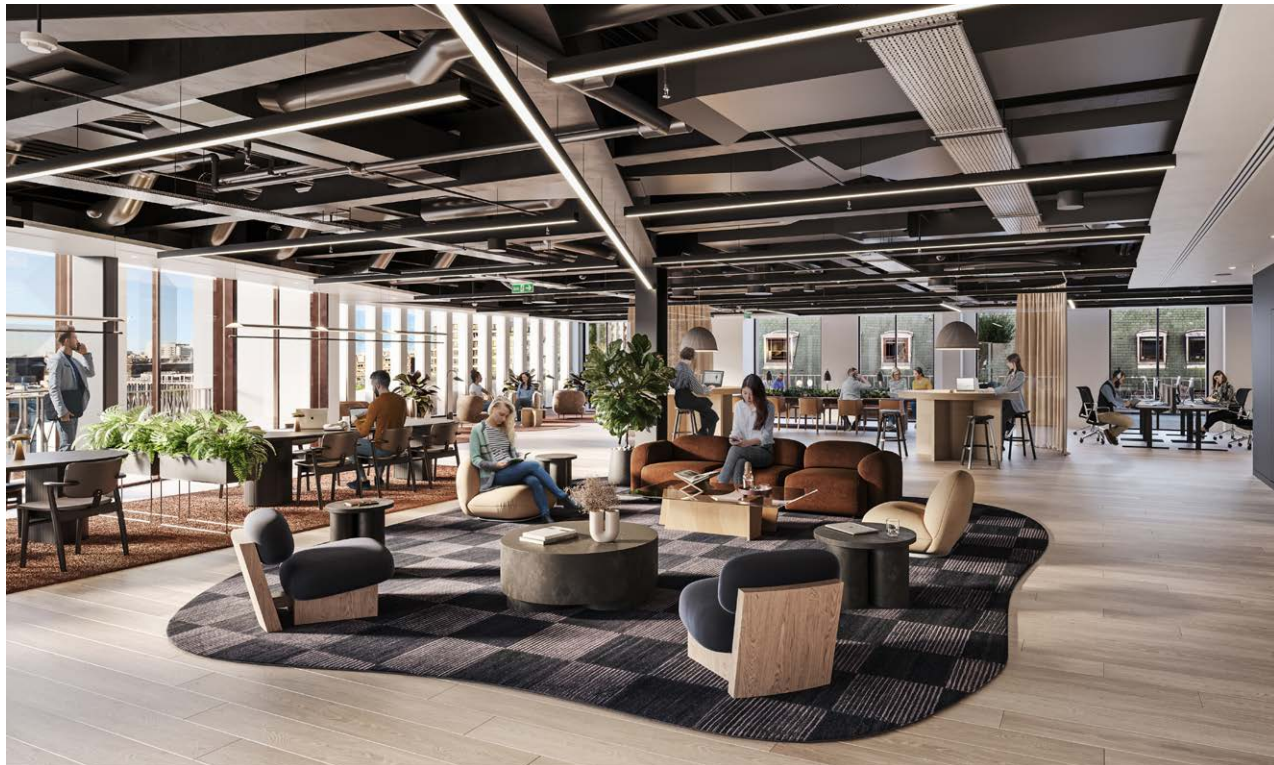
2



3

1. Park House | Changing Room
2. The Earnshaw | Cycle Store
3. The Earnshaw | Bike Racks





1



2



3



4

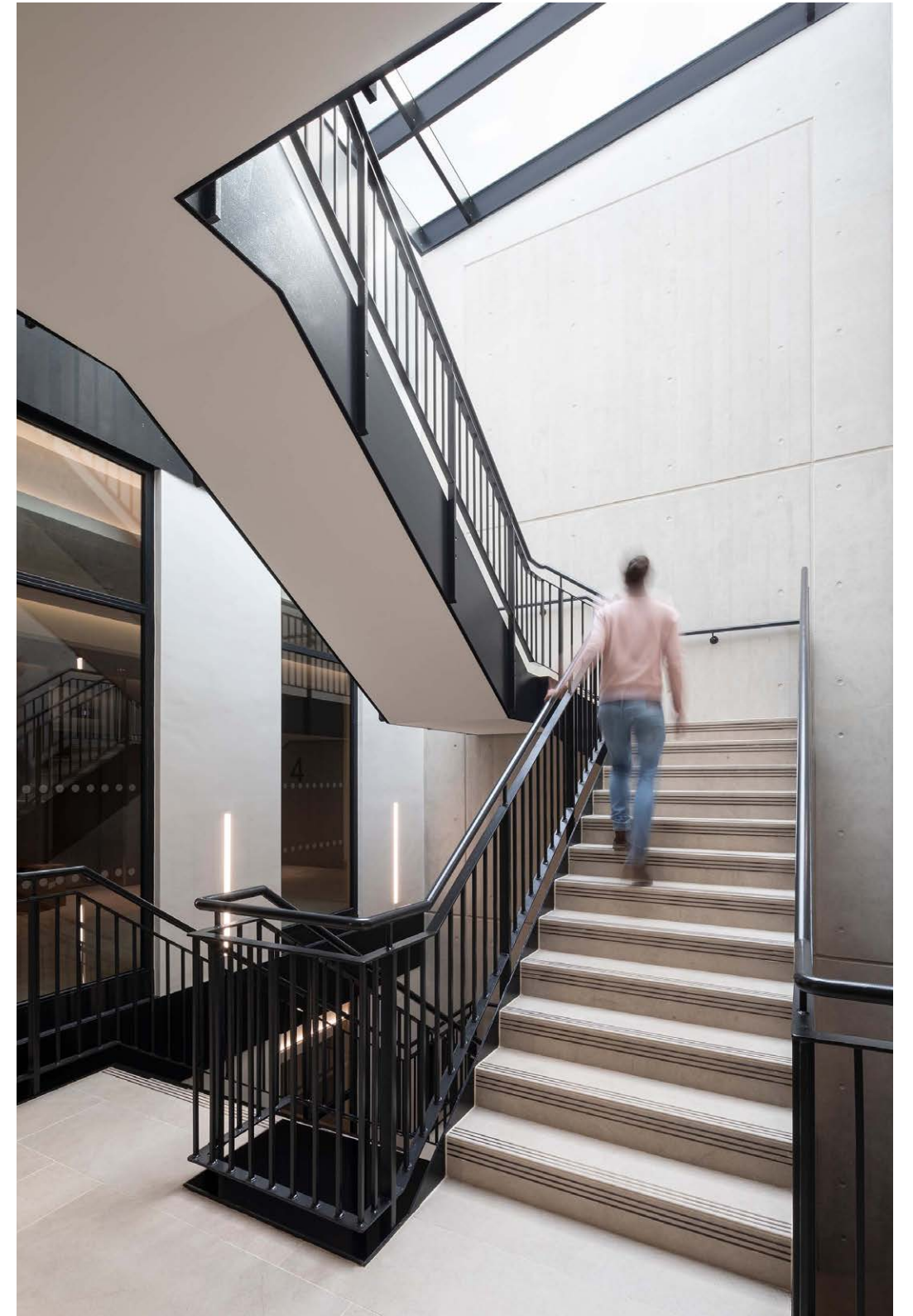
1. The Earnshaw | Flexible Workspace
2. The Earnshaw | On-floor Bathrooms
3. Longwater | Lift Lobby
4. 2 Merchant Square | Office Reception Lobby





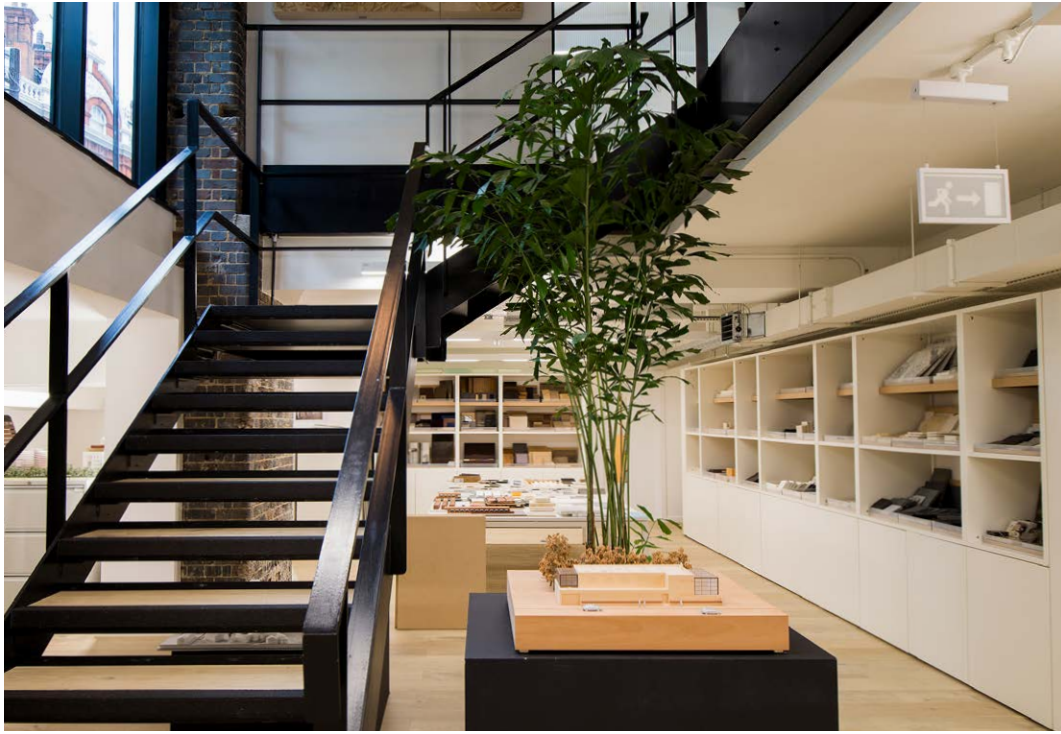
1

1. Park House | Arrival
2. Longwater | Stair



2





1



4



2



3

1. Apt Studio | Materials Library
2. Urbanest City | Cat A Floorspace
3. Longwater | Reception
4. Urbanest City | Reception





1



3



2

1. Apt Studio | Function Space
2. The Earnshaw | On-floor Bathroom
3. The Earnshaw | Common Area





1



2



3

Vine Street Roman Wall

1. Main Space
2. Artefact Display
3. Architectural Support Detail





2



3



1



4

Bodleian Library, Oxford

1. Bespoke Magna Carta Display
2. Bespoke Cabinet Display
3. Treasury Room
4. Floating Display Detail





This is Apt



